



Brine Leas School

An Academy

November 2017

Believe, Learn, Succeed

Dear Parent/Carer,

Re: Key Stage 3: Voluntary Contributions: Year 9

In Design and Technology at Key stage 3 your child will experience working with Materials, Computer Aided Design and Computer Aided Manufacture, Engineering, Electronics and Textiles Technology, this is over and above the DT curriculum. I am writing to request a voluntary contribution of £5.00 towards covering the cost of the extra materials that will be used during lessons. This contribution will cover costs across year 8 in all areas of DT except Food Technology.

By charging, it allows the DT department to continue to offer a full and exciting range of project which focuses on innovative designing and developing practical skills. Each student will make:

- CAD CAM – LASER cut acrylic earphone holder.
- Electronics- Flashing LED warning light
- Engineering- Copper flute.
- Product Design—clock manufactured from acrylic natural and man-made wood.
- Pinhole camera- Manufacture of a working pinhole camera and using traditional wet printing.

Cheques should be made payable to **Brine Leas School** and returned with the reply slip in an envelope to the Drop Box outside Student Reception no later than Friday 24th November 2017.

Cash payments can be accepted when a cheque is not possible. Students must take cash payments direct to the Finance Office and this will be receipted in the student's planner.

If your child is currently eligible for Free School Meals/has in the past been on Free School Meals since 2011/ is currently a Child in Service since January 2011/is currently a Cared for Child or has ever been looked after by an English or Welsh local authority then your contribution will be paid for through the Pupil Premium Fund, please return the form attached with the Pupil Premium Payment option on the reply slip ticked. If your form is returned to school showing the Pupil Premium option and we don't appear to have your child on our Pupil Premium records we may need to contact you to clarify.

Your support is greatly appreciated and really helps in making your child's experience more meaningful and enjoyable.

Yours faithfully,

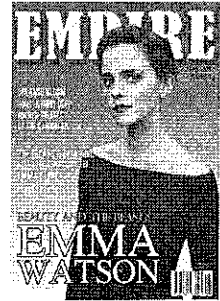
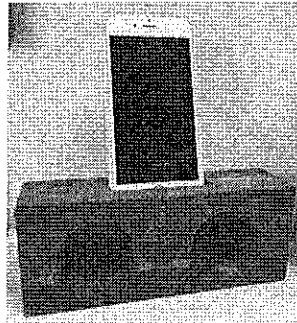
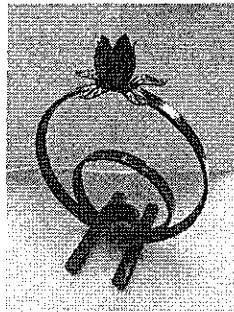
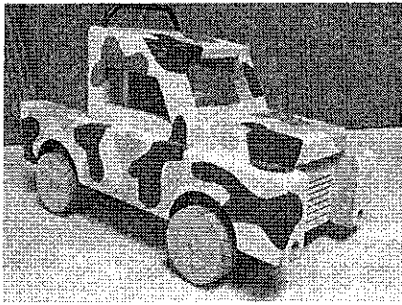
Headteacher: **P. Barton**
Mr Andrew Cliffe
Audlem Road, Nantwich
Cheshire CW5 7DY

Tel. 01270 625663
Fax. 01270 610373
Email. info@brineleas.co.uk
www.brineleas.co.uk



B
L
S

Examples of projects:



Reply Slip – Key Stage 3: Voluntary Contributions D & T Materials – Mr P Barton

Student's Name Progress Group.....

Please find my contribution option ticked:

I have enclosed a cheque for £5.00 made payable to **Brine Leas School**. Please post in to the Drop Box at Student Reception.

I enclose a cash contribution that my child will take to the Finance Office with their planner for a receipt to be provided.

My child is on the Pupil Premium register and my contribution will be covered by the Pupil Premium Fund.

I do not wish to make a voluntary contribution on this occasion.

Signed (Parent/Guardian) Date

Please return to school no later than Friday 24th November 2017