



The Early Entry Programme

2024-2025

Aim

Encouraging and supporting students who wish to apply for Oxford or Cambridge, or for Medicine, Dentistry and Veterinary Science.



What is Early Entry?



All applicants to the University of Oxford or the University of Cambridge, or for Medicine, Veterinary Science and Dentistry have to submit UCAS applications by 15th October each year. This is significantly earlier than the January deadline of most University courses.



Who is involved?



Mrs O'Neill Further guidance

Form Tutors

Subject specialists

Dr Fenech

Mrs Donald – our Work-Related Learning Co-Ordinator.



Who do we work with?



Students who may have the **potential** and the **ambition** to apply to Oxbridge, or for Medicine, Dentistry and Veterinary Science courses.



Aims of the programme?



1. To identify students who have the potential and the drive / ambition to apply to these institutions or for these courses.
2. To support these students throughout their time at Brine Leas Sixth Form so that they have appropriate enrichment and / or work experience to enhance their application.
3. To support students with the application process.
4. To support students with their preparation for admissions tests and interviews.
5. To help students to become aspirational, brave and engaged!



How do we identify students?



- 1. Talk to the students** - give them a chance to express interest, to come forward, to ask questions.
- 2. Look at GCSE results** – who are our top achievers?
- 3. Talk to staff** – who is really shining? Who has the potential to apply to these competitive courses?

Students can declare an interest in Early Entry at any time.



How do we identify students?



- 1. Talk to the students** - give them a chance to express interest, to come forward, to ask questions.
- 2. Look at GCSE results** – who are our top achievers?
- 3. Talk to staff** – who is really shining? Who has the potential to apply to these competitive courses?

Students can declare an interest in Early Entry at any time.



What support do students receive?



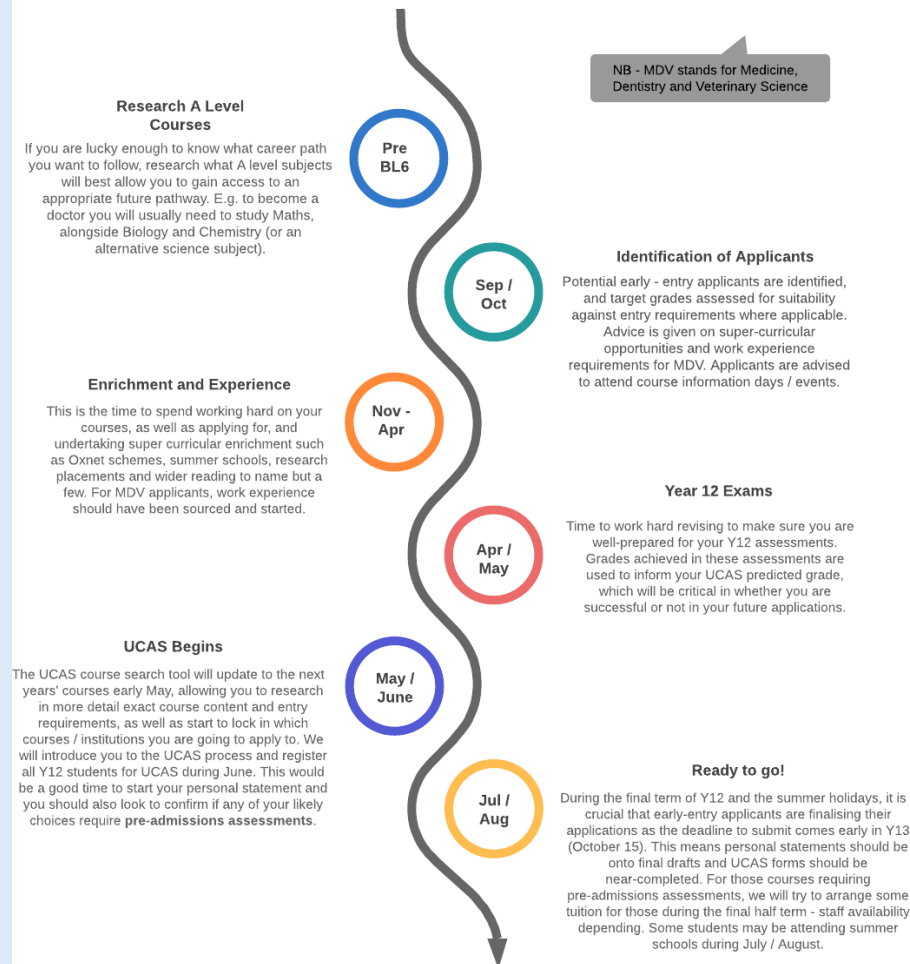
- Personal statement writing workshops.
- Individual support with writing personal statements.
- Individual support with the SAQ for Cambridge (Supplementary Application Questionnaire)
- Personalised support for the Oxbridge entrance exams.
- Support with application for the UCAT.
- Support before interview – all students will have a ‘mock interview’ with someone other than their subject tutor before the interview itself.



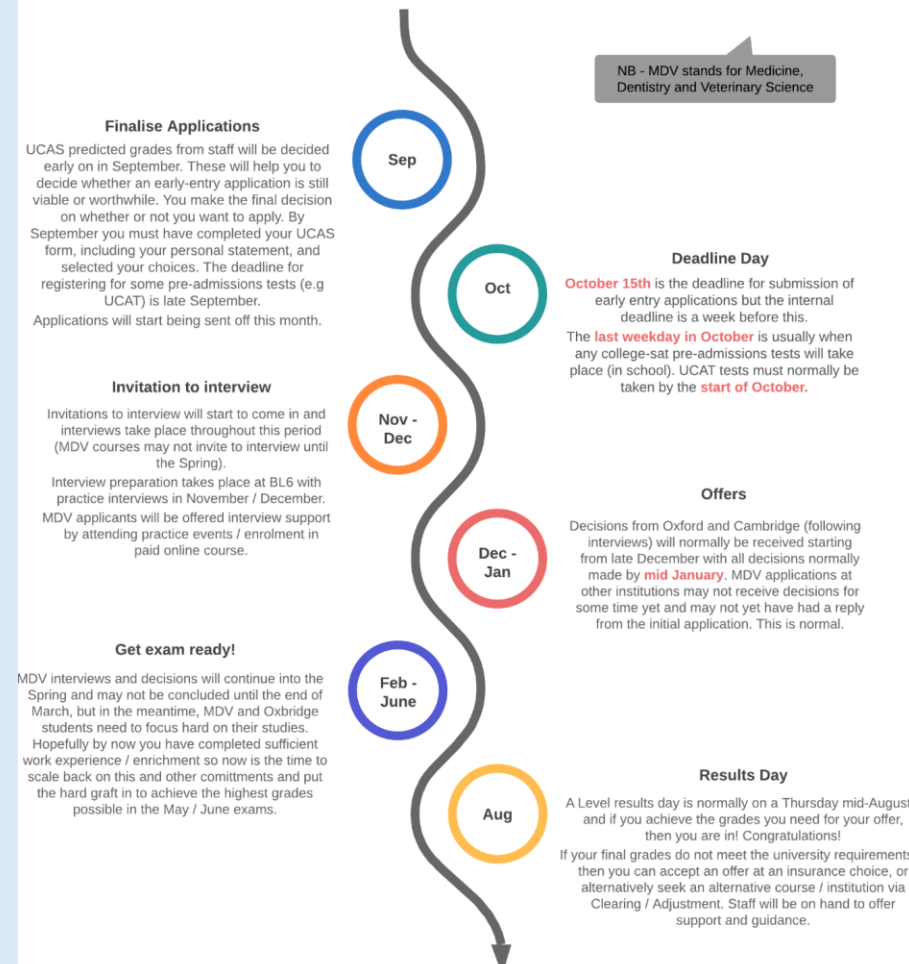
Early Entry Road Maps?



Year 12 Early Entry Roadmap



Year 13 Early Entry Roadmap



What support do students receive?



- Regular meetings to check progress, answer questions, and engage in discussions.
- Support individual students in developing a program of super-curricular activity and/or work experience (via Mrs Donald).
- Organise speakers and / or events – lectures on admissions, talks from students currently at Oxbridge/studying Medicine, or academic lectures.
- Encourage and support students in applications to summer schools / competition entries.
- Liaise with subject teachers to ensure the student has personalised support for the course of their choice.



What are typical entry requirements?



Oxford / Cambridge: Specific requirements per each course and depending on the college, typically A*AA required.

Medicine

Chemistry + Biology + Maths / Physics (AAA)

*Most, but not all medical schools require maths.

Chemistry + Biology plus another (AAA)

An A or B in EPQ can result in a lower offer from universities. E.g. Sheffield offered places at A A B with A in EPQ for Medicine in recent years.

Veterinary Science: Biology + 2 others (normally science disciplines) (AAA)



Dentistry: Chemistry + Biology plus another (AAA)

What is the value of work experience?



It is important for Medicine, Veterinary Science and Dentistry that a student has a strong portfolio of work experience.

There are lots of online alternatives in the post COVID situation, however universities are once again now expecting face to face experience to have taken place where possible.

E.g. Volunteering at hospitals, care homes, GP practices

E.g. Dentistry practices, hospitals

E.g. Large animal and small animal experience



Useful links



- <https://www.ox.ac.uk/admissions/undergraduate/courses/admission-requirements/admission-requirements-table?wssl=1>
- <https://www.undergraduate.study.cam.ac.uk/applying/entrance-requirements>
- <https://university.which.co.uk/advice/a-level-choices/what-a-levels-do-you-need-to-become-a-dentist>
- <https://www.ucas.com/ucas/subject-guide-list/veterinary-science>



What are examples of Summer Schools / Visits / Conferences?



- Pembroke North Super curricular scheme
- Oxford / Cambridge Open days
- Uniq Summer Schools (Oxford)
- Sutton Trust (Research placements)
- Oxbridge Student Conferences (Liverpool)
- Keele Medical Day / Steps2Medicine
- North West Science Network @ Corpus Christi College
- 'Making Maths' @ University of Manchester
- Cambridge University Master Classes
- Application preparation day at a local partner school
- And much, much more.



How do students decide where to apply?



- Do your research
- For medicine, veterinary science and dentistry, some institutions are more competitive than others.
- Preference college or open college?
- For Oxford / Cambridge, different colleges may be more/less competitive for certain courses. Tactical applications are common but are unlikely to have a massive impact in increasing the chances of success.
- <https://www.undergraduate.study.cam.ac.uk/apply/statistics>



History of success



- In the last 5 cohorts, we have had a strong success rate with 8 students achieving offers / places at Oxford / Cambridge on courses including Mathematics, Chemistry, Medicine, Law, and Natural Sciences. Current Y13 have 2 offer-holders.
- We have also had great success in terms of Medicine and Veterinary Science with numerous students achieving undergraduate places across the country over the last few years – many of these students come back to support our existing cohorts.





**Thank
you for
listening**

Q&A

