

B  
L  
E



**Brine Leas Sixth Form** An Academy

Believe ▪ Learn ▪ Succeed

A warm  
**WELCOME**



Brine Leas Sixth Form retains its own character and purpose while operating in a school setting. Opening in 2010, Brine Leas Sixth Form offers modern facilities, suited to learning in the 21st Century. It has become the destination of choice for many students from schools across South Cheshire and Shropshire, which gives a rich feel to life at Brine Leas Sixth Form.

Progressing into post-16 education marks the start of a new chapter in your lives. We will support and guide you to select subjects that you find exciting and engaging, ones that will aid your future studies and career pathways. We want you to progress to your chosen university, apprenticeship, college or employment.

At Brine Leas Sixth Form, the welfare and happiness of every student is paramount. Early on, students are supported to become successful independent learners and they benefit from outstanding teaching. Innovative and engaging lessons are central to our values and we have an enviable examination record. Students enjoy coming to sixth form; they tell us that they like the lessons, feel supported and that they are given opportunities to succeed.

Brine Leas Sixth Form was judged to be outstanding by Ofsted in 2017 and this remained unchanged in the most recent inspection in 2022.

High standards underpin all aspects of life to ensure you have the best possible choices after Brine Leas Sixth Form. There are no limits to your potential, and we look forward to working with you to achieve your aspirations.



A handwritten signature in black ink that reads "D. Cole".

Mr David Cole  
Headteacher

A handwritten signature in black ink that reads "Sarah O'Neill".

Mrs Sarah O'Neill  
Head of Sixth Form

Believe ■ Learn ■ Succeed





## Ofsted Summary

Feel free to download the outstanding Ofsted Report on Brine Leas Sixth Form. The main points are summarised below:

The sixth form centre provides an excellent environment to study. Classrooms are bright and stimulating.

Break-out spaces are heavily populated with computers and work areas. Students' work is celebrated through excellent displays. The coffee shop area provides a pleasant place in which students can socialise.

The sixth form provides an ideal stepping stone between school and higher education or employment, where students are expected to take responsibility for their learning and development.

Students say that for them, the most significant feature of the Sixth Form is the excellent relationships they have with their teachers. They say that teachers know them well from the beginning of Year 12.

The quality of teaching is outstanding. Teachers have excellent subject knowledge across the sixth form.





## Why Brine Leas Sixth Form?

### Ethos

We have different routes for students to excel in whatever they do and celebrate success.

### A wide range of academic choice

The sixth form offers a wide range of subjects and there is more individual teaching and support.

### Experienced, specialised and committed staff

All our teachers have developed expertise in teaching their courses. They have excellent subject knowledge and give guidance to students on how to improve the quality of their work. Our staff provide numerous subject clinics and revision sessions when required.

### Links with Higher Education

We have links with a range of Universities, such as Oxford, Cambridge and other institutions, including Russell Group Universities. All students have the opportunity to make visits and are given support with UCAS applications.

Interested students are encouraged to apply to the Pembroke North Programme, offered by Oxford University, and will receive individual support from our specialised Oxbridge and Early Entry Co-ordinator.

### Independence

The Student Union has elected officials which organise charity and social events.

### Support

“There is an excellent support system. Staff are sensitive to students’ individual needs, and support for their emotional and physical wellbeing is excellent. Small tutor groups, which meet daily, enable strong rapport to be established, ensuring personalised references for applications to higher education, apprenticeships or employment.” Ofsted 2017

Tutors will monitor progress and additional guidance is provided by our Pastoral Team which includes a Special Educational Needs Team, Careers Advisor and Counsellor.

### Keeping Parents informed

During the first half term, there will be an evening to give you and your parents the opportunity to discuss your transition from GCSE to A Levels with form tutors. There are regular short progress reports in addition to a parents’ evening when subject tutors are available to discuss progress and give guidance for success. We also hold a Post Sixth Form evening in Year 12 to advise parents about Post-18 choices (apprenticeships, universities, GAP years) and to offer guidance regarding the UCAS process, student finance etc.

### Facilities

Brine Leas Sixth Form has a friendly and welcoming atmosphere. There are comfortable study areas, with over 100 work stations for private study, in addition to specialist teaching rooms; Language and Science Laboratories, Library, Music and Media Suites, Technology Workshops, Photography Studio and a Gym. The Coffee Shop is open all day and provides drinks, snacks and meals.

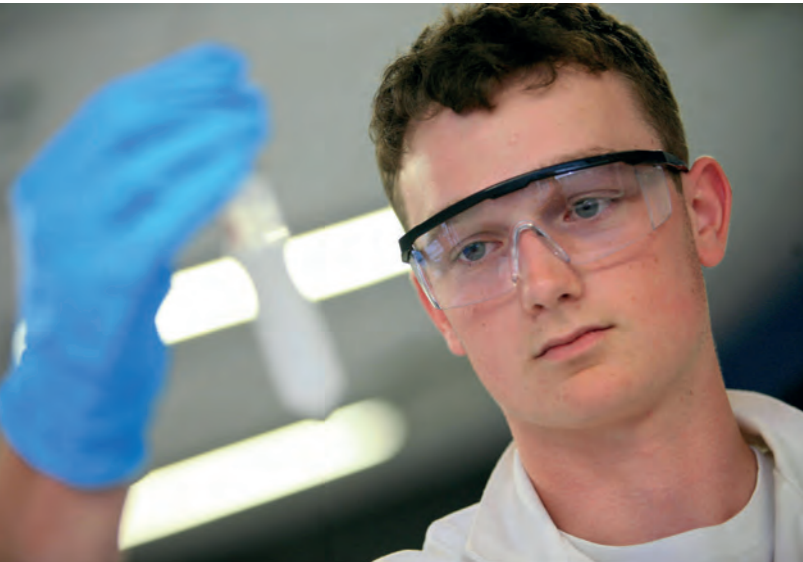
### Financial Assistance

Brine Leas Sixth Form funds Student Union membership for all students and, for eligible students the BL6 16-19 Bursary.



# What Will I Study?

## Maximise opportunities: curriculum enrichment



The majority of students study 3 A Level subjects and undertake an extra curricular programme. In addition, students can select a further qualification as part of their core curriculum. We offer the Extended Project Qualification (EPQ), Core Mathematics and STEP Mathematics to students to enrich their learning. These qualifications will give additional UCAS points and validate your ability to work independently and demonstrate interest in a particular field.

Our individually tailored programmes offer students extended academic and enrichment programmes to ensure a greater chance in securing a place at one of the top universities or with a prestigious employer/ apprenticeship provider.



## Courses offered at Brine Leas Sixth Form

### A - LEVEL COURSES

Courses will be reviewed and are subject to a minimum number of students.

- Art
- Biology
- Business Studies
- Chemistry
- Computer Science
- Drama and Theatre Studies
- Economics
- Electronics
- English Language
- English Literature
- English Language and Literature
- Film Studies
- Food Science and Nutrition
- Geography
- Government and Politics
- Graphic Communications
- History
- French
- Spanish
- Law
- Mathematics
- Further Mathematics
- Mathematics - Statistics
- Media Studies
- Music
- Photography
- Physics
- Physical Education
- Product Design (3D design)
- Psychology
- Religious Studies
- Sociology
- Textiles

### LEVEL 3 VOCATIONAL COURSES

These courses are a good preparation for the world of work; they carry UCAS points and enable progress to Higher Education.

- BTEC National Extended Certificate in Engineering
- BTEC National Extended Certificate in Performing Arts
- BTEC Level 3 National Certificate in Sport





## Enrichment at Brine Leas Sixth Form

Enrichment activities are encouraged in order to develop a wide range of skills that will help students in the future; we recommend at least four hours each week. These activities help to develop time management, the ability to work with others and to problem solve. In addition to our timetabled and tailored programme of enrichment, students' personal development is promoted well through an individual programme of enrichment. There are many enrichment opportunities on offer.

- Literature Buddies (supporting literacy and reading of students in Brine Leas School)
- Sum Buddies (supporting numeracy of students in Brine Leas School)
- Sport Buddies (supporting younger students in PE lessons)
- Debating Society
- Student Union (including organising charity and social events)
- Sports team participation
- Basic Introduction to First Aid Qualification
- Work Experience
- Cooking on a budget
- Employment Readiness Programme

## The Future Beyond Brine Leas Sixth Form

We ensure students are well informed about the world of work and provide very good careers guidance and support. The majority of students progress to higher education; a large proportion progress to one of the Russell Group Universities, including Oxford and Cambridge, as well as some other top universities.

An increasing number of students have attained highly sought after apprenticeships in well-known companies, including AO, Astra Zeneca, Barclays, the BBC, Bentley and Jaguar Land Rover.

“Students’ personal development is promoted well through an individual programme of enrichment”



# Higher Education

In preparation for University students undertake a wide range of enriching events which include:

- University visits including; The University of Manchester and Keele University open days.
- Workshops on choosing a higher education institute, writing personal statements, making the transition from A Levels and BTECs to university.
- Attending the UCAS convention.
- Specialised UCAS support from our specially trained team.
- Interview preparation.
- Post - 18 preparation event.
- Academic enrichment opportunities through the EPQ.

Specialised support will be provided for aspiring applicants to Oxford or Cambridge Universities and for those who are interested in Medicine, Dentistry and Veterinary Science.

- Provide opportunities to visit Oxford and/or Cambridge Universities.

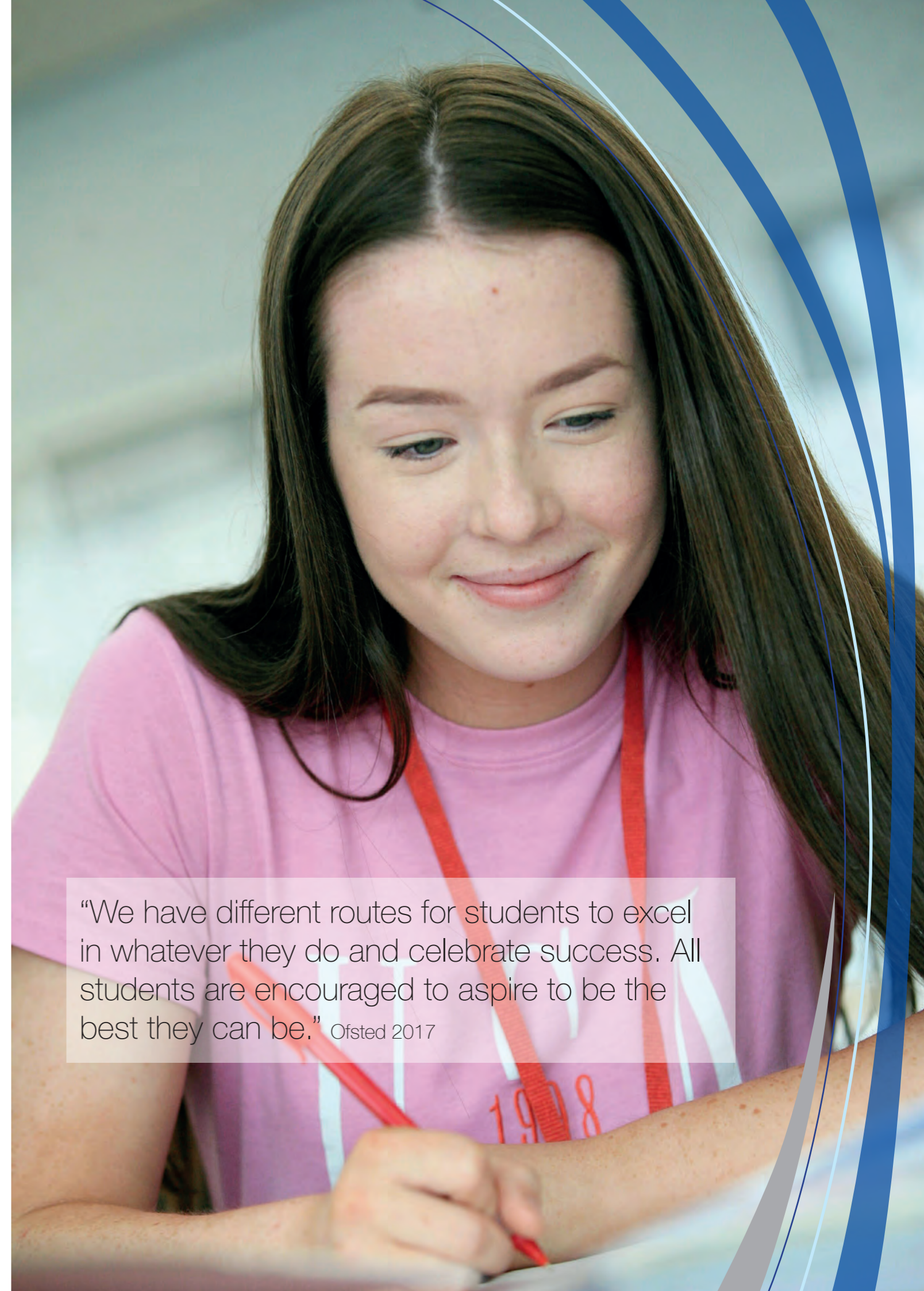
- Support applications to a number of summer schools and other university academic opportunities including the Sutton Trust Summer Schools programme, Oxford University's UNIQ programme as well as their Pembroke North Programme.
- Organise a trip to an Oxbridge admissions conference.
- Interview preparation for tailored mock interviews with an external provider who will give personalised feedback.
- Prepare for entrance examinations, such as the BMAT for Medicine and various Oxbridge exams.
- Co-ordinate a programme of lectures and tutorials with an exciting range of visiting speakers from Oxford and Cambridge Universities as well as the medical professions.
- Provide one-to-one support with work experience and other extra-curricular activities.
- Direct support with writing personal statements.

## Apprenticeships and World of Work

With rising costs of higher education and the improved alternatives, a growing number of students have secured highly sought after apprenticeships or employment. As part of our careers support we offer:

- Help with CV writing.
- Mock interview experience.
- Independent advice and guidance from our careers advisor.
- Advice on budgeting and finance.
- Guest speakers from a variety of fields to share their experiences.
- Attendance at an Apprenticeship Convention.

"I have really enjoyed my time here, making new friends with people from other schools"



"We have different routes for students to excel in whatever they do and celebrate success. All students are encouraged to aspire to be the best they can be." Ofsted 2017

# Entry Requirements

The demands of courses at Brine Leas Sixth Form are notably higher than those for GCSE and it is our experience that students who do not meet the criteria will find the courses difficult and are likely to struggle with their studies. As a result the minimum entrance requirements for Brine Leas Sixth Form are:

- 5 or more good (Grade 5 and above) passes at GCSE.
- A good pass in Mathematics AND English GCSE (Grade 5 and above).

You may be able to study an A Level subject you did not take at GCSE. When a subject has been previously studied, there are minimum entry requirements for particular subjects as specified within our course guide.

If you do not achieve the minimum grade in English and/or Mathematics your enrolment to Brine Leas Sixth Form will be considered on an individual basis.

# Application Process

1. Carefully look at all the courses available; read the course guides and select courses that interest you. Speak to subject specialists at one of our open events.
2. Complete the course preferences application form, available from Brine Leas Sixth Form or [www.brineleas.co.uk](http://www.brineleas.co.uk)
3. If requested, attend an informal information advice and guidance session to discuss your chosen studies, extra-curricular interests and your future plans.
4. Receive a conditional offer letter.
5. Return your acceptance form.
6. Come along to our subject taster sessions to confirm your choices.
7. After GCSE results, you may attend a second advice and guidance session to enrol and to confirm your subject choices.



“Our individually tailored programmes offer students a greater chance to secure a place at one of the top universities”





**Brine Leas Sixth Form** An Academy

**Brine Leas Sixth Form**  
Audlem Road  
Nantwich  
Cheshire CW5 7DY

01270 621612  
[admin@bl6.org.uk](mailto:admin@bl6.org.uk)  
[www.brineleas.co.uk](http://www.brineleas.co.uk)